

Materials, Supplies, & Cutting Diagram No. 162

Craftsman-style Grandfather Clock

A	Case Front Stiles (2)	1 x 4 $\frac{1}{2}$ - 76 $\frac{3}{4}$	Z	Upper Door Stiles (2)	1 x 3 - 15 $\frac{13}{16}$
B	Case Front Top/Middle Rail (2)	1 x 1 $\frac{1}{4}$ - 18	AA	Upper Door Rails (2)	1 x 4 $\frac{1}{4}$ - 12 $\frac{13}{16}$
C	Case Front Bottom Rail (1)	1 x 5 - 18	BB	Lower Door Glass Stop (2)	$\frac{1}{4}$ x $\frac{1}{4}$ - 60 rgh.
D	Case Back Stiles (2)	1 x 4 $\frac{1}{2}$ - 76 $\frac{3}{4}$	CC	Upper Door Glass Stop (2)	$\frac{1}{4}$ x $\frac{1}{4}$ - 22 rgh.
E	Case Back Top Rail (1)	1 x 3 - 18	DD	Inner Frame Sides (2)	$\frac{5}{8}$ x 2 - 17 $\frac{1}{4}$
F	Case Back Middle Rail (1)	1 x 4 - 18	EE	Inner Frame Top/Bottom (2)	$\frac{5}{8}$ x 2 - 13 $\frac{1}{4}$
G	Case Back Bottom Rail (1)	1 x 8 - 18	FF	Outer Frame Sides (2)	1 x 1 $\frac{1}{4}$ - 17 $\frac{1}{4}$
H	Case Back Upper Panel (1)	$\frac{1}{2}$ x 16 $\frac{5}{8}$ - 13 $\frac{3}{4}$	GG	Outer Frame Top/Bottom (2)	1 x 1 $\frac{1}{4}$ - 15 $\frac{1}{4}$
I	Case Back Lower Panel (1)	$\frac{1}{2}$ x 16 $\frac{5}{8}$ - 47 $\frac{1}{4}$	HH	Clock Face Panel (1)	$\frac{1}{2}$ ply. - 15 $\frac{1}{4}$ x 15 $\frac{1}{4}$
J	Case Side Stiles (4)	1 x 2 $\frac{3}{8}$ - 76 $\frac{13}{16}$	II	Movement Beams (2)	$\frac{3}{4}$ x 1 $\frac{1}{8}$ - 20 rgh.
K	Case Side Top Rails (2)	1 x 3 - 11 $\frac{1}{4}$	JJ	Beam Cleats (2)	1 x 1 $\frac{1}{2}$ - 14 $\frac{1}{2}$
L	Case Side Middle Rails (2)	1 x 4 - 11 $\frac{1}{4}$			
M	Case Side Bottom Rails (2)	1 x 8 - 11 $\frac{1}{4}$			
N	Case Side Upper Panels (2)	$\frac{1}{2}$ x 11 $\frac{1}{8}$ - 13 $\frac{5}{8}$			
O	Case Side Lower Panels (2)	$\frac{1}{2}$ x 11 $\frac{1}{8}$ - 47 $\frac{5}{8}$			
P	Case Bottom (1)	$\frac{3}{4}$ x 14 $\frac{3}{4}$ - 22 $\frac{5}{8}$			
Q	Bottom Cleat (1)	$\frac{3}{4}$ x $\frac{3}{4}$ - 22 $\frac{3}{16}$			
R	Lower Top Panel (1)	$\frac{1}{2}$ ply. - 15 $\frac{1}{2}$ x 19			
S	Lower Top Panel Front Border (1)	$\frac{1}{2}$ x 3 $\frac{1}{2}$ - 25 $\frac{1}{2}$			
T	Lower Top Panel Side Border (2)	$\frac{1}{2}$ x 3 $\frac{1}{2}$ - 18 $\frac{3}{4}$			
U	Upper Top Panel (1)	$\frac{1}{2}$ ply. - 18 $\frac{3}{4}$ x 25 $\frac{1}{2}$			
V	Upper Top Panel Front Border (1)	$\frac{1}{2}$ x 1 - 27			
W	Upper Top Panel Side Border (2)	$\frac{1}{2}$ x 1 - 19 $\frac{1}{2}$			
X	Lower Door Stiles (2)	1 x 3 - 50 $\frac{13}{16}$			
Y	Lower Door Rails (2)	1 x 3 - 12 $\frac{13}{16}$			

- (2 Pr.) 2" Ball-Tipped Butt Hinges w/Screws
- (2) Pendant Pulls
- (4) Brass Bullet Catches
- (1) $\frac{1}{4}$ "-thick Beveled Glass (10 $\frac{1}{2}$ " x 45 $\frac{1}{2}$ ")
- (1) $\frac{1}{4}$ "-thick Beveled Glass (13" dia.)
- (1) .020 Ga. Sheet Brass (24" x 24")
- (1 Set) Clock Face Numbers
- (1 Pk.) Upholstery Tacks for Clock Face Markers
- (1) Mechanical Clock Movement
- (11) #8 x 2" Fh Woodscrews
- (2) #8 x 1 $\frac{1}{2}$ " Fh Woodscrews
- (4) #8 x 1" Brass Fh Woodscrews
- (3) #8 x 1 $\frac{1}{4}$ " Fh Woodscrews
- (1 Pk.) $\frac{1}{2}$ " Wire Brads

1" x 5 $\frac{1}{2}$ " - 96" Quartersawn White Oak (4.6 Bd. Ft.)



1" x 5 $\frac{1}{2}$ " - 96" Quartersawn White Oak (4.6 Bd. Ft.)



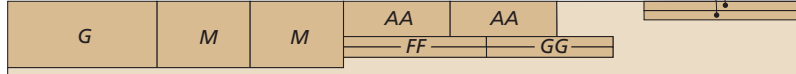
1" x 5" - 96" Quartersawn White Oak (4.2 Bd. Ft.)



1" x 5 $\frac{1}{2}$ " - 96" Quartersawn White Oak (4.6 Bd. Ft.)



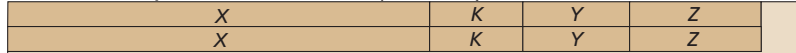
1" x 9" - 96" Quartersawn White Oak (7.5 Bd. Ft.)



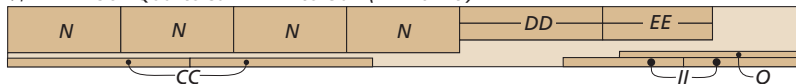
1" x 5" - 96" Quartersawn White Oak (Two boards @ 4.2 Bd. Ft.)



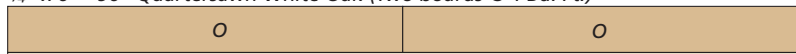
1" x 6 $\frac{1}{2}$ " - 96" Quartersawn White Oak (5.4 Bd. Ft.)



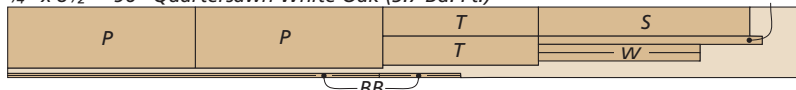
$\frac{3}{4}$ " x 7" - 96" Quartersawn White Oak (4.7 Bd. Ft.)



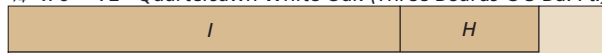
$\frac{3}{4}$ " x 6" - 96" Quartersawn White Oak (Two boards @ 4 Bd. Ft.)



$\frac{3}{4}$ " x 8 $\frac{1}{2}$ " - 96" Quartersawn White Oak (5.7 Bd. Ft.)



$\frac{3}{4}$ " x 6" - 72" Quartersawn White Oak (Three Boards @ 3 Bd. Ft.)



$\frac{1}{2}$ " - 48" x 48" Oak Plywood

