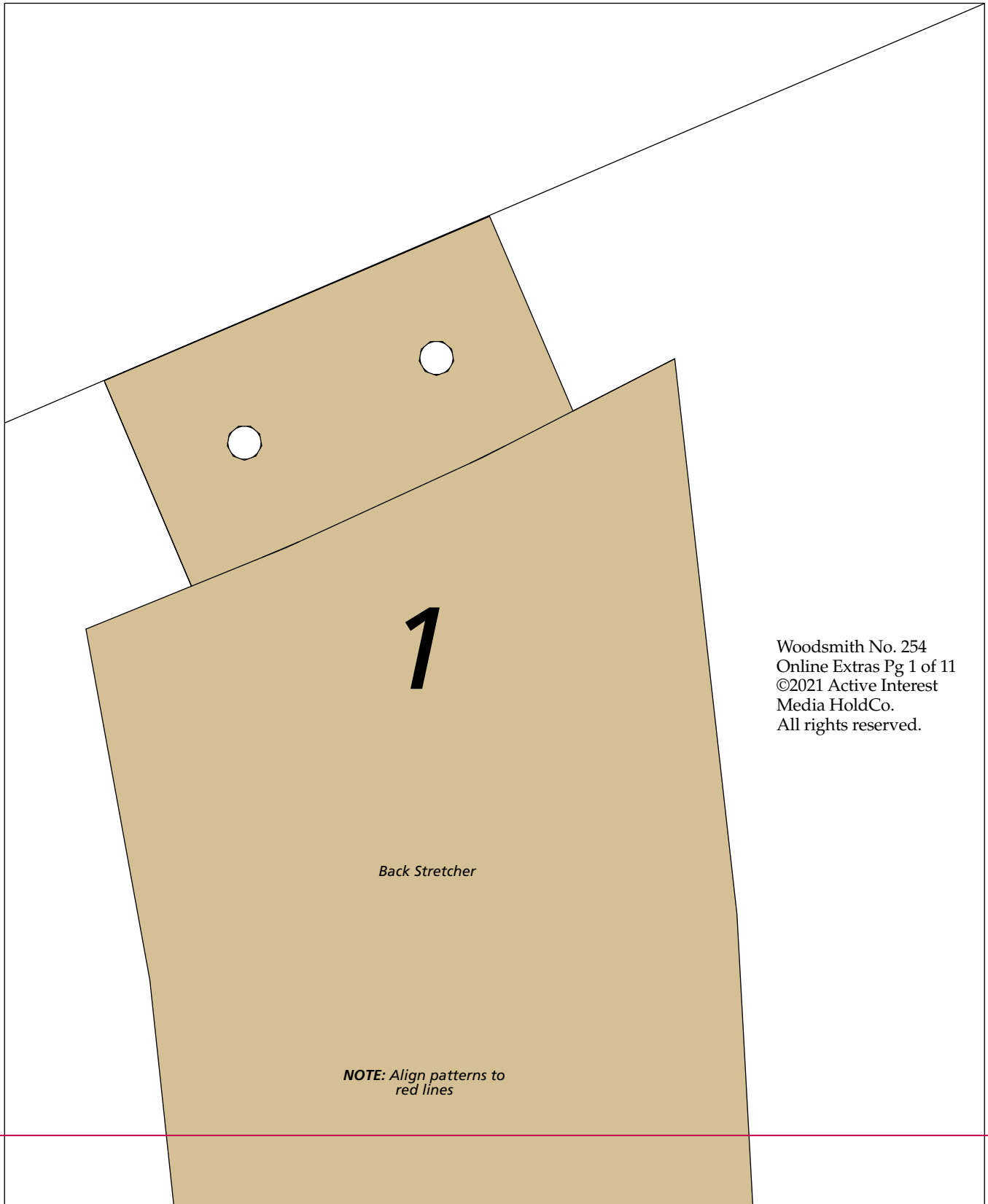


Leisure Daybed Patterns

Tape the patterns together at the indicated line and attach to a piece of $\frac{1}{4}$ " hardboard to make a template. Use a band saw to shape the template and refine to the pattern lines with a file and rasp. Print off a set of patterns for each of the legs as well, to transfer the mortise locations accurately across the four legs.



Woodsmith No. 254
Online Extras Pg 1 of 11
©2021 Active Interest
Media HoldCo.
All rights reserved.

THIS EDGE UP

2

Back Stretcher



3

Back Stretcher

4

Back Stretcher

5

Back Stretcher

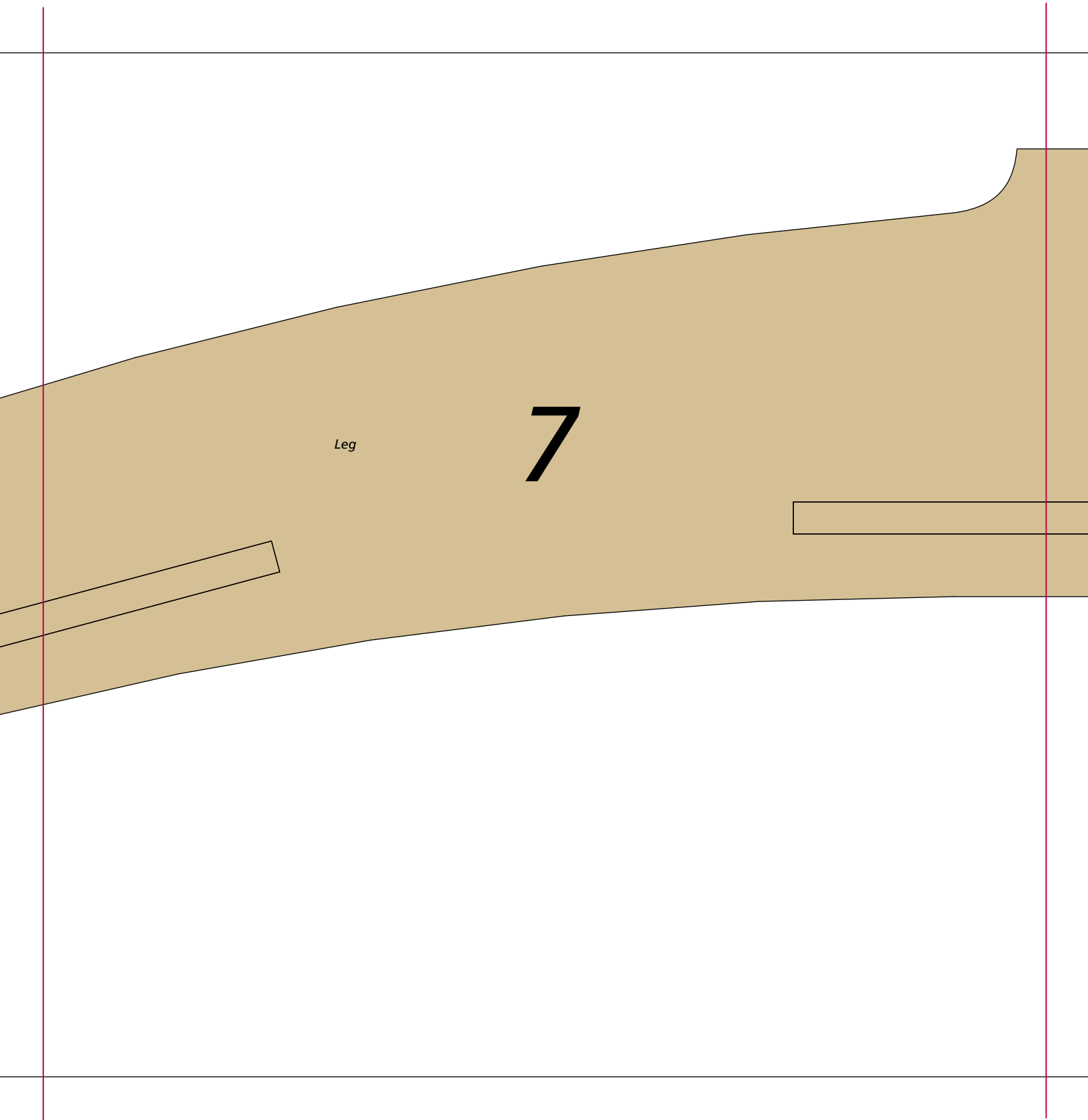
THIS EDGE UP

6

NOTE: Align patterns to red lines

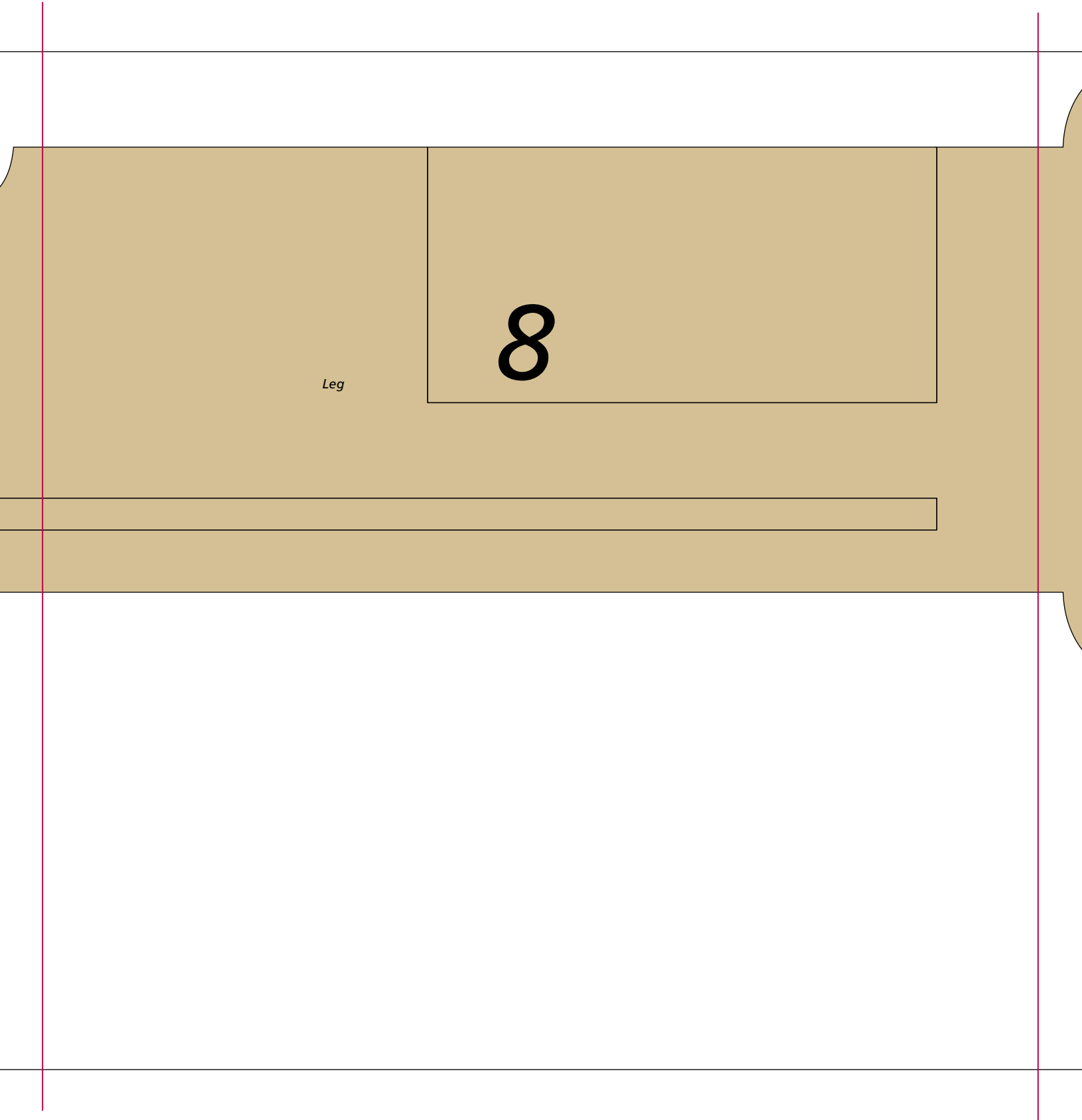
Leg

NOTE: This mortise is for the back legs only



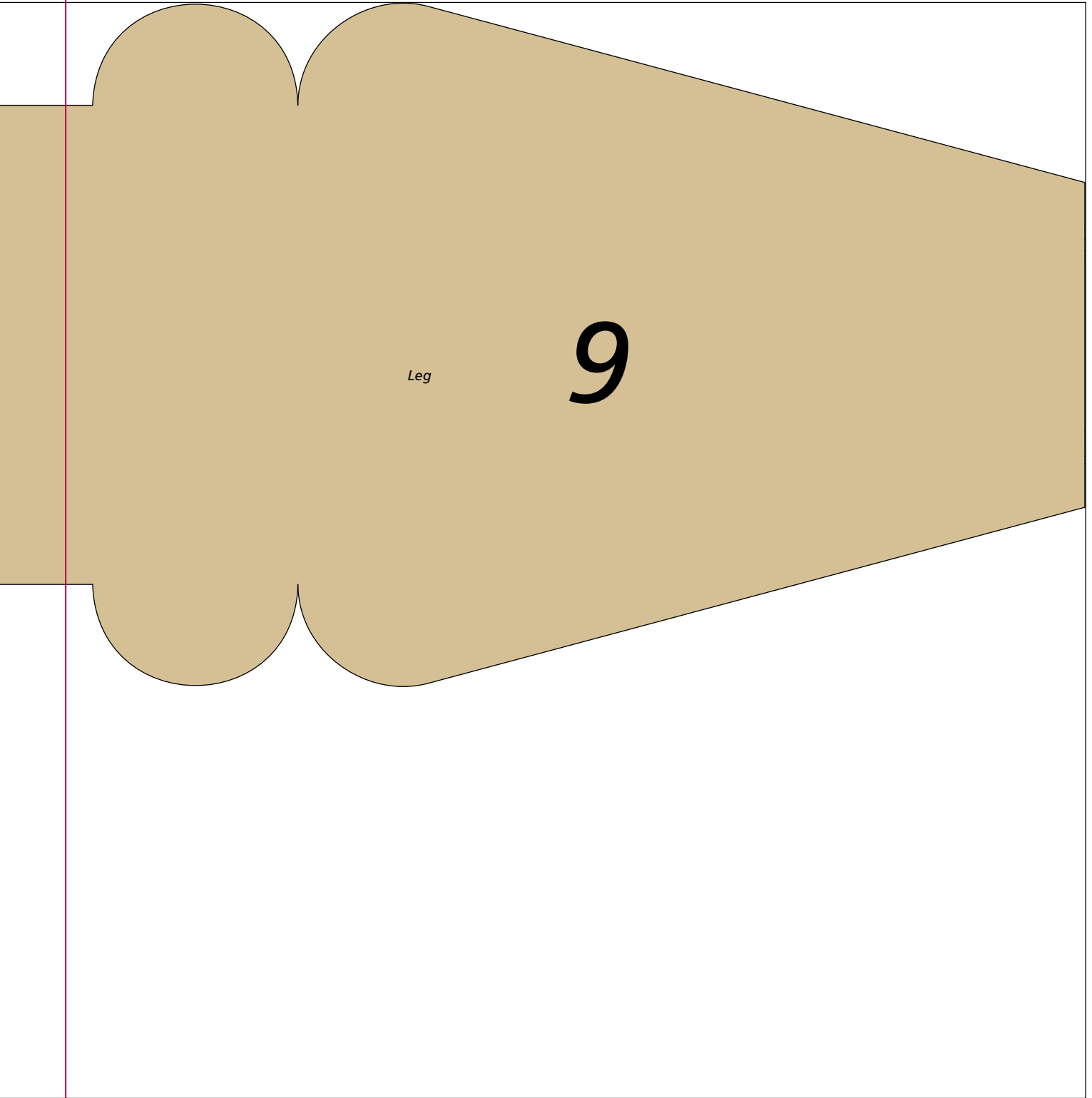
Leg

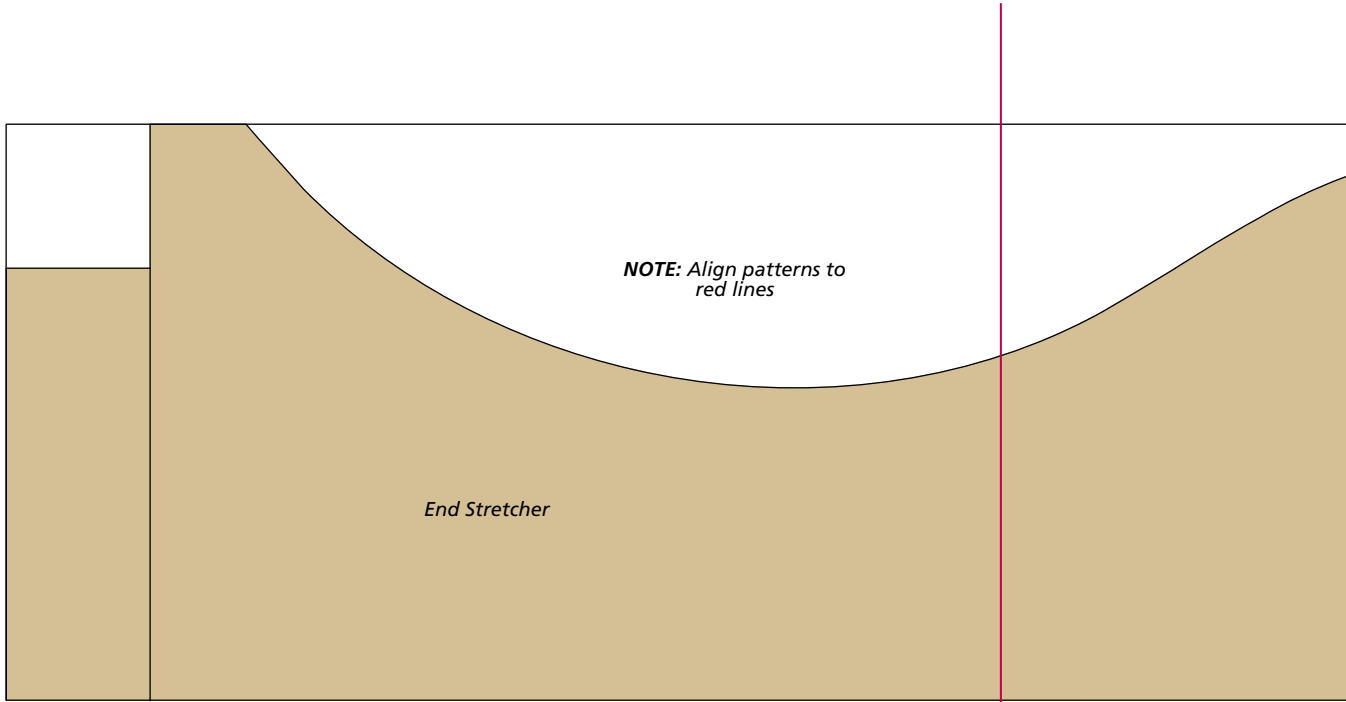
7



Leg

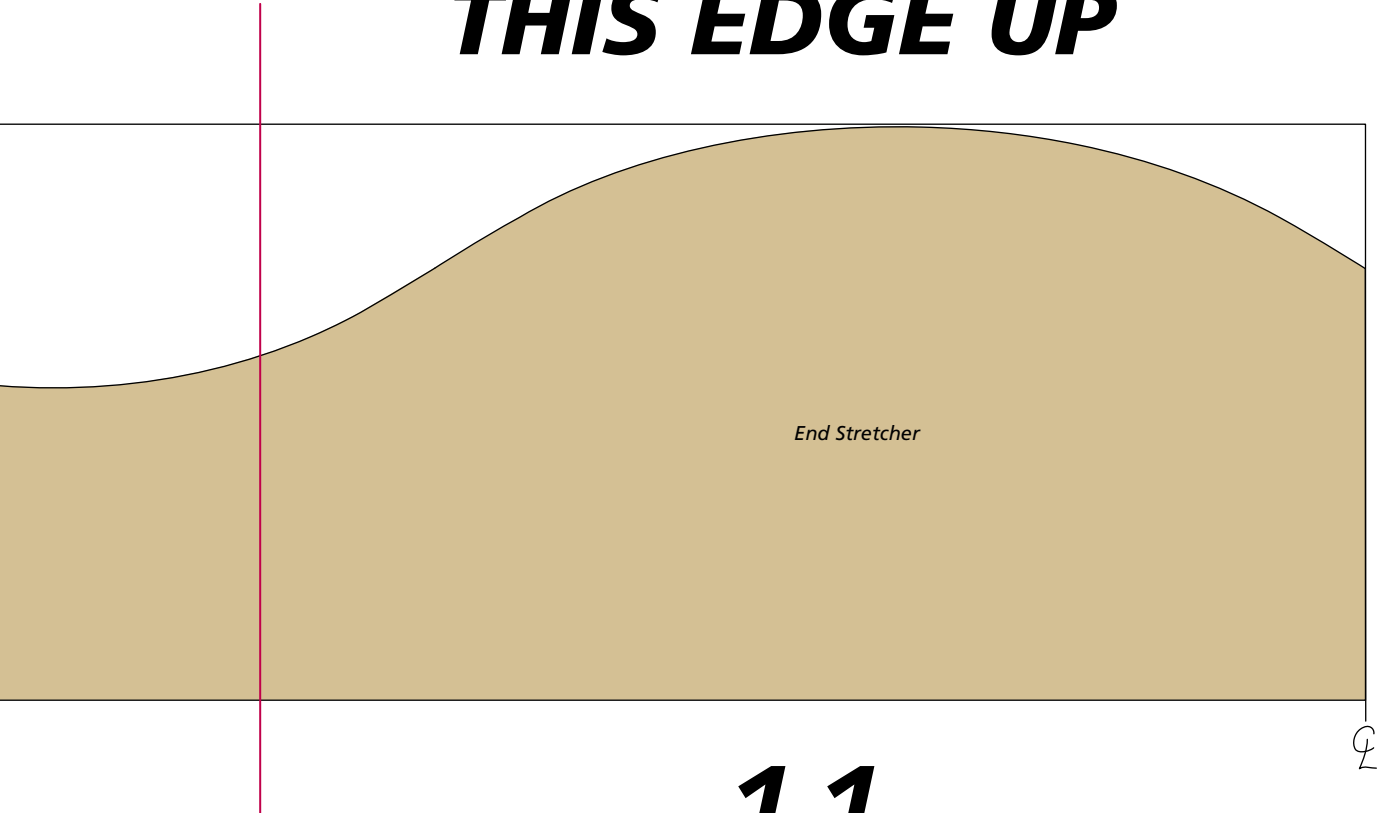
8





10

THIS EDGE UP



11